

# The Grapevine



Toddler, Early Childhood, Elementary and Junior High

also online at [www.woodinvillemontessori.org](http://www.woodinvillemontessori.org)

Volume 29:13

"Learn. Grow. Become."

Thursday, January 5, 2012

## January

7	Admissions Open House for Prospective & Moving Up Families and Students, 9am – 11am, NC (All levels)	19	Jr High Drama Performance: Macbeth, 7pm, Canyon Park JH
9	JH Cycle 2 Finals Begin	20	JH Cycle 2 Ends
11	BOT Exec Cmte Mtg, 4:30pm, NC	20	Yearbook Pre-Order Begins (thru Feb 3)
11	Investor Group Meeting, 7pm, NC	20	JH Business Event: Kids' Night Out, 6-10pm, NC
<b>16</b>	<b>NO SCHOOL – Observing Martin Luther King Jr. Day</b>	23	Semester II Electives Begin
17	Early Bird Deadline for Jan 30 Camp	23	JH Cycle 3 Begins
17	JH Immersion Days begin	24	Investor Group Meeting, 7pm, NC
17	Permanent Home "Sneak Peek," 4-6pm, NC	26	Students' Teaching Night (See classroom news for details)
18	BOT Meeting, 7pm, NC	27	Mid-Year Reports Go Home
19	Intent to Re-Enroll for 2012-13 Opens	27	Intent to Re-Enroll for 2012-13 closes
19	PA Exec Mtg, 9am, NC	<b>30</b>	<b>NO SCHOOL – In-service Day (Fig Open)</b>
			<i>Camp available for EC/EL students by prepaid reservation.</i>
		31	Deadline Application for Admissions for 2012-13

## Next Step for Permanent Home

Join us on Tuesday, January 17<sup>th</sup> from 4-6pm for a sneak peek of our new buildings in North Creek! Come learn about our future plans and enjoy photos of Woodinville Montessori School's earlier days. Everyone is welcome!

## Prospective Students Invited to Open House on Jan 7

If you know anyone interested in applying to WMS, please consider inviting them to attend our Admission Open House, taking place THIS Saturday, January 7 from 9-11am. This event offers prospective families, as well as current families of students moving to a new program level (Lower Elementary or Jr. High), the chance to see our Toddler - 9th grade program. Sign-in at 9am, program starts promptly at 9:10am. Children are welcome, they will visit the classroom and child care will be available for younger children during the Q&A panel. If you or someone you know wants to attend, please let us know. For more information about this Open House and future Open Houses, please visit the WMS website: [www.woodinvillemontessori.org/admissions/openhouse](http://www.woodinvillemontessori.org/admissions/openhouse).

### Schedule of Events

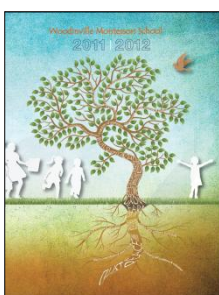
9:00am	Sign-in
9:10am	Welcome
9:20am	Q&A panel will answer your questions about the school and transitioning to new levels
10:00am	Visit program level of interest and hear from teachers
10:40am	Tour the rest of the school and classrooms at other program levels
11:00am	Program concludes

We hope to see you at our Open House and look forward to continuing our school's relationship with your family.

## Intent to Re-enroll for 2012-13

Intent to Re-Enroll for 2012-13 opens on January 19. Stay tuned for more information on this year's process. Please remember that you must schedule a classroom observation if your child is moving to Elementary or Junior High and you have no other children at that level.

## Get Your Pictures in the Yearbook!



The Yearbook Staff invites students and parents to submit photos for the yearbook. If you've got great photos of school and community events or you and your friends just having fun, we'd like to see them. Our photographers can't be everywhere. Help us get as many photos as possible to create a terrific book everyone will want to have.

Email your photos to Jillian at [jdickson@woodinvillemontessori.org](mailto:jdickson@woodinvillemontessori.org), or stop by with a disk or thumb drive and we can download the photos while you wait. It's that easy. Submit your photos today!

*The Yearbook Staff will review all photos and determine final yearbook content. We cannot guarantee that all submissions can be used in the yearbook.*

## To Do:

- ☑ **Bring a friend to Open House** this Sat Jan 7.
- ☑ **Register for after-school electives** for the winter/spring semester by Jan 12.
- ☑ If you are moving to a new program level in 2012-13, **schedule an observation for Elementary or Junior High.**
- ☑ **Mark your calendar for Students' Teaching Night** in your child's classroom on Jan 26. Watch for invitations coming home soon.
- ☑ **Process the paperwork for matching funds** if your gift through Annual Giving qualifies from your employer.
- ☑ **Save the date** of Mar 24 for our *World's Fair Gala & Auction!*

## WMS In the News

[Finally a permanent home for Woodinville Montessori School!](#)



## Electives Update

Our electives are a fun-filled way to spend an afternoon and a great alternative to the after school routine! We have a terrific line up of activities to offer you, so please make sure to look them over and respond by January 12th.

For all the details, see the [WMS 2011-12 Winter/Spring Electives Packet](#). If you have any questions or suggestions, please contact Lea at [laemisegger@woodinvillemontessori.org](mailto:laemisegger@woodinvillemontessori.org).

## Woodinville Montessori School

North Creek – Bothell Campus  
19102 North Creek Parkway South, Suite 100  
Bothell, WA 98011  
tel: (425) 482-3184  
fax: (425) 482-3186

Woodinville Campus  
13965 NE 166th Street  
Woodinville, WA 98072  
tel: (425) 481-2300  
[info@woodinvillemontessori.org](mailto:info@woodinvillemontessori.org)

[www.woodinvillemontessori.org](http://www.woodinvillemontessori.org)



# PA CORNER



If you have any ideas or questions for the Parent Association, please contact Dagny Cook at [dagnycook@gmail.com](mailto:dagnycook@gmail.com).

To find out how you can volunteer to help (there are plenty of jobs, big and small), you can email Cathy Mithel at [cmithel@aol.com](mailto:cmithel@aol.com).

RSVP to [volunteer@woodinvillemontessori.org](mailto:volunteer@woodinvillemontessori.org) if you plan to attend an upcoming Volunteer Training Session.

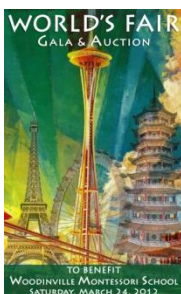
To record your volunteer service hours, logon to **Parents Web**, click on the Family Information tab and then select the family member whose volunteer hours you will be entering. Click on the Service Hours tab, then Add Service Hours and then Save to submit.



Save the Date: Mar 24

## World's Fair Gala & Auction

by Mary Nelson, PA Auction Communications Chair



We invite you to attend and support our annual World's Fair dinner and auction fundraiser on Saturday, March 24, 2012 at the Lynnwood Convention Center. As a non-profit independent school, we depend upon the generosity of our families and community to help us provide an exceptional educational experience for our students. Your support of this event will help enrich our students' scholastic experiences.

We need you, your talent and your connections! We are soliciting donations for our annual "World's Fair" auction and need your support in pursuing auction items, event sponsorship, advertisements and more! Be creative and ask your friends, family, colleagues, church

members and neighbors for donations that will add to our amazing selection of bid items such as the use of a condo, vacation home, boat or camper or sports events or theater tickets, etc. We all have talents like sewing, cooking and photography and time teaching someone these skills is also a welcome donation. Don't forget to ask your favorite barista, salon, restaurant or shop owner for a donation.

### About our auction:

- This year's World's Fair theme reflects the broad diversity of our student body.
- An anticipated 240 auction attendees will help raise over \$140,000.
- Contributes 57% of our fundraising revenue.
- All donations are tax deductible.
- All proceeds directly benefit our students through professional development of staff, special school programs, curriculum development, and scholarships.

### How you can support us:

- Donate an auction item or attend the event. ([Procurement Form](#))
- Become an event sponsor or provide a monetary donation to underwrite event costs. ([Ad Campaign / Sponsorship Form](#))
- Purchase advertisement space in our auction catalog, which will be distributed to over 300 local families and friends. ([Ad Campaign / Sponsorship Form](#))
- Auction Information Packets that include all forms needed to donate or solicit donations were emailed earlier this week. Please visit [2012 World's Fair Auction](#) for further details and forms.

Support from families, friends and business partners is key to our auction success and we truly appreciate your donation. Please contact us at [auction@woodinvillemontessori.org](mailto:auction@woodinvillemontessori.org) or 425-482-3184 with any questions or interest in volunteering time in planning this important annual event.



The Fig Class (Toddler) welcomes

- **Hannah** and her parents **Donny & Brandy Peterson.**
- **Finn** and his parents **Alexander & Trina Kelly.**

Elm Class (Early Childhood) welcomes

- **Evelyn** and her parents **Leland & Tracie Shenfield.**
- **Audrey** and her parents **E. Alexander & Trina Kelly.**
- **Penelope** and her parents **George & Kristy Brookhart.**

Pine Class (Early Childhood) welcomes **Manisha** and her parents **Nanda & Younghee Manogaran.**

Juniper Class (Lower Elementary) welcomes **Narendra** and his parents **Nanda & Younghee Manogaran.**

Madrona Class (Lower Elementary) welcomes **Aryan** and his parents **Kautilya Lanba & Meenakshi Rani.**

The Apple Class (Early Childhood) welcomes **Nathan** and his parents **Tyler Lawson & Sara Ortiz.** Nathan just moved up from Fig Class (Toddler) to the Early Childhood Program. Congratulations!



Congratulations to **Kyle** and the **Mascarenhas family** (Pine – Early Childhood) on the birth of Khloe on December 13<sup>th</sup>.

## Welcome New Staff Members

Welcome to our two new staff members, **Lindsey Spadoni** (Upper El Assistant / North Creek PM Club House Staff) and **Kathleen Salter** (Woodinville PM Club House Staff).

We thank **Stephanie Lewis** and **Karl Sampson** for their service to WMS and wish them well in their academic pursuits.

## Wanted: Auction Support Volunteers

The Auction Committee is looking for ten volunteers able to contact local and out-of-area businesses to let them know we are kicking off our procurement season!

Contact information has been compiled and now volunteers are needed to reach out to these businesses via phone, email or in person. We are specifically in need of volunteers to cover the following areas: Bellevue Square, Entertainment, Mill Creek, Radio/TV, Restaurants, Sports, Woodinville, and Advertisers. Cover letters and a script are already prepared and the procurement forms packet is ready for distribution.

If you are interested or need more information, please email Procurement Co-chairs Judy Perran at [perrans@comcast.net](mailto:perrans@comcast.net) or Julie Schwarz at [schwarz.julie@yahoo.com](mailto:schwarz.julie@yahoo.com). Thank you in advance for your help.



## Investor Group Opportunities

by Beth Bazley, Development Director

WMS families are invited to learn about a new socially responsible investment opportunity benefiting Woodinville Montessori School. The Learn Grow Become LLC will serve the sole purpose of assisting us in buying our new home. Investors will have the benefit of helping our school grow and maintain its strong financial grounding, as well as the rewards from investing their own funds. Everyone who is interested or would like to learn about this opportunity is invited to attend these informational meetings or meet individually. Steve Ferris from Affinity Financing will present the investment program and Beth Bazley, WMS Director of Development, will share the benefits to WMS. All are invited to attend; participation in the investment is available to accredited investors.

Please plan to attend one of these two Investor Group Meetings at North Creek campus:

**Wednesday, January 11, 7pm**

**Tuesday, January 24, 7pm**



## Pike Place Street Scramble

by Eileen Breseman, Orienteering Instructor

Pike Place Street Scramble held on Sunday, December 11 included teams *Moxie in Motion* (Eileen, Atsuko, Page), *O Bros* (Erik & Tyler), and *Rock Rats* (Andy & Brian). Participants ran/walked for 2 hours to visit holiday checkpoints and answer questions for points. There was strategy involved in planning how far your team could go and adding up point values to make the best choice within the time limit and executing it. *Moxie* team took first place in the Women Veteran category! The *O Bros* earned 3rd and *Rock Rats* 4th in the Junior division. The weather was cold with a bit of sunshine mid course as the teams raced for the Market Foundation and the fun of the holiday season!

## phi-lan-thro-py (noun)

*“The life of a man consists not in seeing visions and in dreaming dreams, but in active charity and in willing service”*

~ Henry Wadsworth Longfellow



- Thanks to **Lauri Cook** for her continued graphic design support of our website and school communications. We love our new auction block on the website home page!
- Thanks to **Trish Dillon, Adrianna Lower-Stephenson, Cathy Liggett, Debra Ann Ridling, Kristi Caldwell** and **Luchuan Liang** for assembling application packets for prospective families.
- Thanks to the following donors for their very generous in-kind donations providing supplies, materials and services which greatly benefit our school:
  - Margaret Andersen** for the magazine display case;
  - Emily Lin** for Windows 7 Ultimate Edition and Netgear network switch;
  - Liesl Bohan** for the books;
  - Lilac Muller** for two complete AED kits with wall mounts;
  - Jennifer and the Alyazdi family** for the books and envelopes;
  - Pam Walentynowicz** for the couch;
  - Jason & Carli McSorley** for the puzzles and Dell Laptop Dock;
  - Lisa Peterson** for the books;
  - Kirk Nygaard** for Air Duct Cleaning.

Fri Jan 20 6-10pm NC  
**Looking for a Night Out?**

Register your child at the front desk for December's Dragon-themed Kids' Night Out! Kids aged three and older can come enjoy a night full of fun activities, crafts, and a movie.

**Who:** Kids ages 3 and up (must be potty-trained)

**When:** Fri Jan 20, 6-10pm

**Where:** North Creek campus, Ginkgo Classroom (Junior High)

**Cost:** \$20 for the first child. One additional sibling is \$10. All other siblings are \$5 each.

Dinner is not provided, but the children will be given snacks. Thanks for your support of the Junior High Business!

## Student Reflections

Juniper Class (Lower Elementary) students responded to journal prompt "Imagine that all students could choose which school they want to attend. Write 3 or more reasons why a student should choose WMS." Here are some of the things they said:

*"I think it's good because it goes to toddlers to 9<sup>th</sup> grade. And you get to do work on the ground."* - Siddharth

*"Because this is the school I like best and I want to stay here till ninth grade. This place has nice materials and helps our mind."* - Zoe L.

*"I like my school because we go to YMCA."* - Aina

*"I like this school the best and I want to stay here forever. All the kids are nice to each other."* - Sarah

*"Because it has lots of classrooms and grade levels and different works to do."* - Ben

*"I think because tables are not where you sit all the time. And I think because we just go to work and we do not have to raise our hand all the time."* - Ainsley

*"I think this is a great school because you get your own colored pencils."* - Hayden F.

*"I like the books and math because it is fun."* - Bella

*"There is good work. It's the best school EVER!"* - Keyan

*"I think WMS is one of the best schools in the world because we get to use the field right next to our school. Because I get the best teachers in the whole wide world."* - Zoe S.

*"You get to meet new students all different ages. We get to get out of the classroom for recess and field trips."* - Kylie

*"Because I like the music and circle and snack".* - Sofie

*"Kids get to learn something different at the same time."* - Colin

*"This is a good school. It is good to study hard. It is fun to play here".* - Matt

*"We have two teachers in each class. Everybody is at their own level."* - Hayden B.

*"They should attend because they will like YMCA. They will like reading buddies. They will like work plans. They will like field trips. They are all fun."* - Kitty

*"They would come because there is a Learning Lab. They would come because this is an awesome school."* - Lucy



## Caroling for Cambodia

Seven WMS Junior High students went Christmas caroling last month and raised a matched-fund of \$450 that was used to buy school supplies for a school and a water buffalo for a poor family in rural Cambodia. WMS Junior High parent Jim Reinnoldt visited the school last month to make the school supply donation and the water buffalo will be donated this spring. The Reinnoldt family will spend the summer of 2012 in Bangkok and would be happy to host a visit by any members of the WMS community. Anyone interested in making a visit and/or a similar donation can contact the Reinnoldts at [jreinn@u.washington.edu](mailto:jreinn@u.washington.edu).