

The Grapevine



Toddler, Early Childhood, Elementary and Junior High

also online at www.woodinvillemontessori.org

Volume 29:12

"Learn. Grow. Become."

Friday, December 16, 2011

December

- 16 Jr. High Business Event: Kids' Night Out, 6-10pm, NC
19-23 NO SCHOOL – Winter Break (Fig Open)
Camp available for EC/EL students by prepaid reservation.
26-30 NO SCHOOL – Winter Break (Fig Closed)
30 AGP Focus Period Ends (Campaign runs thru 6/30)

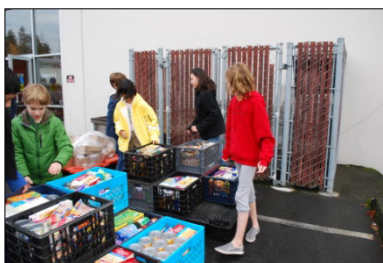
Have a wonderful winter break!

January

- 2 Classes Resume
2 Auction Procurement Begins
3 Auction Meeting, 6pm, NC
4 Volunteer Training, 7pm, WV
6 Semester II Elective Registration Opens
7 Admissions Open House for Prospective & Moving Up Families and Students, 9am – 11am, NC (All levels)
9 JH Cycle 2 Finals Begin
13 Intent to Re-Enroll for 2012-13 Opens
16 NO SCHOOL – Observing Martin Luther King Jr. Day

HOT OFF THE PRESS: Finally a Permanent Home!

Join us in celebrating the purchase of the North Creek buildings making our dream of owning a permanent home for our school a reality! The sale closed this morning. Thanks to the Board of Trustees and the entire WMS community for helping us to finally have the permanent home we've been planning for. Stay tuned for more information after Winter Break.



Food and Toy Drive A Huge Success

This year's Hopelink Holiday Food and Toy Drive was once again a big success. With the help of drivers Sabine Stehling, Stephany Schneider & Gwenna Eckert, WMS 6th grade students delivered 1,312 pounds of food and over 300 toys/gifts, plus \$50 in gift cards. Thank you to the entire WMS community for this huge show of support! And a special thanks to Cathy Mithel for her behind the scenes work to schedule our Hopelink visit and coordinate volunteers in support of this year's drive.

After unloading all the goods, students volunteered at Hopelink's Northshore location, sorting and shelving several full pallets of donated food, at least equal to the amount donated by WMS if not more. The students worked together as teams of runners and sorters, delving into bag after bag, box after box of food items. They all had a great time. Here are some of their reflections:

"Running the Hopelink drive has been really fun and amazing. To see some of the things that people brought in, or how many things that they brought in, is great. One of the things that someone brought was a digital camera. That was really wonderful. The sixth graders are amazed at how many donations we have had this year. Thanks to everyone who donated!" – Emma

"Hopelink's massive effort to help the needy was inspiring." – Alec

"There are more people who need help than I had imagined." – Livia

"It was moving." – Ryan

"It was physically tiring but it felt good." – Kendal

"It was fun to help people." – John

In addition to our annual Hopelink drive, Upper Elementary students in the Cedar and Cypress classrooms have been knitting hats and making scarves to give to a family shelter. Mary Kate from Sacred Heart Family shelter visited our school to pick up all the lovely items made by our students and to speak about the need these shelters face. The Sacred Heart Shelter is located on lower Queen Anne and is a temporary shelter that offers a safe, home-like refuge to homeless families and single women in Seattle.

WMS curriculum emphasizes service to community and integrates service projects throughout the year. Service projects are an essential part of a Montessori education, which is dedicated to developing lifelong learners with a global perspective, an understanding of the interrelatedness of all people and all life, and a commitment to caring for self, others, humanity and the environment. Kudos to all of the WMS students for their involvement in these impactful service projects.

To Do:

- ☑ If you need child care on Dec 19–23, **register for Winter Break Camp.**
- ☑ **Check lost and found** for that missing glove, lunchbox, raincoat, etc. All items not picked up by Fri Dec 16 will be donated to Goodwill.
- ☑ If you have not done so already, turn in your Annual Giving Program (AGP) pledge card today. **Please join us so we can reach our goal of 100% participation.** Your gift will make a difference.
- ☑ **Mark your calendar** for our Open House/ Program Preview on Saturday, January 7th if you are moving to a new program level in 2012-13.
- ☑ **Have a wonderful winter break!**



Winter Break Schedules

Early Childhood, Elementary, Junior High: No School Dec. 19-30

Toddlers: No School Dec. 26 - 30

Camp: Available Dec. 19-23 by prepaid reservation.

North Creek Office: Closed Dec. 26 & 30

Woodinville Office: Closed Dec. 19-30

Nanny Needed

Full Time Nanny needed starting January 2, 2012 Monday thru Friday from 7am to 3pm. Please contact Mary Nelson at 425-293-2709.

Woodinville Montessori School

North Creek – Bothell Campus
19102 North Creek Parkway South, Suite 100
Bothell, WA 98011
tel: (425) 482-3184
fax: (425) 482-3186

Woodinville Campus
13965 NE 166th Street
Woodinville, WA 98072
tel: (425) 481-2300
wmsadmin@woodinvillemontessori.org

www.woodinvillemontessori.org



PA CORNER



If you have any ideas or questions for the Parent Association, please contact Dagny Cook at dagnycook@gmail.com.

To find out how you can volunteer to help (there are plenty of jobs, big and small), you can email Cathy Mithel at cmithel@aol.com.

RSVP to volunteer@woodinvillemontessori.org if you plan to attend an upcoming Volunteer Training Session.

To record your volunteer service hours, logon to **Parents Web**, click on the Family Information tab and then select the family member whose volunteer hours you will be entering. Click on the Service Hours tab, then Add Service Hours and then Save to submit.



Photos courtesy of Carli McSorley

Cookies!

by Stephanie Schneider, PA Social Committee

The frosting was flying on Saturday, December 3, at the Parent Association's 4th Annual All-School Cookie Decorating Party! Dozens of parents and kids alike enjoyed the festive holiday music, while adorning cookies with frosting and a variety of sparkly sprinkles.

After most of the cookies were eaten (not very many actually made it home), everyone got to see the new classrooms and remodeled areas, many funded by the Annual Giving Program. And the Jr. High was doing a brisk business at its Annual Craft Sale Preview.

It was a great time! If you didn't make it this year, be sure to join us next year!

Wanted: Auction Support Volunteers

by Julie Schwarz, Auction Procurement Committee

The Auction Committee is looking for volunteers able to contact local and out-of-area businesses to let them know we are kicking off our procurement season!

Contact information has been compiled and now volunteers are needed to reach out to these businesses via phone, email or in person. Cover letters are already prepared and the procurement forms packet is ready for distribution. We are in need of merchandise, monetary donations and sponsorships, as well as advertisers for the auction catalog.

If you are interested or need more information, please email Julie Schwarz, Procurement Committee Co-Chair, at schwarz.julie@yahoo.com. Thank you in advance for your help.



phi-lan-thro-py (noun)

"No one has ever become poor by giving."

~ Anne Frank



The Fig Class (Toddler) welcomes **Sophia** and her parents **James & Karen Mae Masse**.



- Thank you to **Page Robinson, Tara Cox** and **Lorraine Gjerde** for referring prospective students and their families to our Open House. A word of mouth referral from friends, coworkers, and acquaintances goes a long way. It is the number one reason new families come to us. We appreciate your continued enthusiasm and commitment to our school; you are a huge part of our success. Thank you for all that you do!
- Thanks to **Fiona Haynes** for helping at our November Open House.
- Thank you to the **Teacher & Staff Appreciation Committee** for the delicious holiday tapas and treats!
- Thanks to the entire **WMS Community** for supporting our effort to help people in need through Hopelink donations of food and holiday gifts. And thanks to all of our **6th year students** for spearheading this campaign as ambassadors to Hopelink.
- Thank you to **Jiseon Shin, Sujata Banerjea, Leslie Mehren, Jeff Li, Lily Peacock** and **Juliana Harrisking** for providing office support for our holiday card mailing.
- Thanks to **Jon Revere** and **Laura Roughsedge** for taking photographs for the yearbook and all-school use.
- Thanks to **Trent, Audrey and Kail** for sorting, packing and delivering WMS sweatshirts last week. And thanks to **Lying Wong** for coordinating the shirt order for the orienteering team.
- Thanks to **Julie Schwarz** and **Sabine Stehling** for their ongoing admin support.
- Thanks to **Jennifer Johnson** for continuing to hang pictures throughout North Creek campus.

Help Us Reach Our Goal

by Fiona Haynes, Fund Development Committee

As winter break approaches, and we enter the final weeks of the active phase of our Annual Giving Program, we want to thank all those who have generously donated thus far. With your efforts, we have raised \$84,010. Our giving tree is blooming, but we would love to adorn it with even more beautiful flowers. While we have 56% participation overall, with the Board of Trustees and WMS faculty at 100% (thank you!), the family group is currently lagging at 58%.

So at this busy time of year, and recognizing that we all have many demands on our time and money, we respectfully ask that you take a moment to think about what WMS means to you, and to make your donation now. Remember, your gift is 100% tax-deductible, and its value doubles if your company has a matching gifts program.

Please help us reach our goals of \$110,000 and 100% participation at any level that is comfortable for you. Funds from the Annual Giving Program are used to provide financial aid for families who would otherwise be unable to send their children here, for improvements and maintenance of our newly expanded facilities, and to support the many and varied programs our children enjoy at WMS.

In this season of giving, we thank you for supporting our school, and wish you a happy and safe Holiday.

Participation – Annual Giving Program 2011-12 (as of Dec 13)

Fig	Apple	D Fir	Elm	Maple	Oak	Pine	Juniper	Madrona
39%	31%	50%	32%	55%	38%	32%	65%	48%

Spruce	Willow	Cedar	Cypress	Ginkgo
52%	63%	57%	63%	58%

Family	Board	Staff	Total \$
58%	100%	100%	84,010

End of Year Giving

If you haven't had a chance to donate and you would like to make a gift during 2011, please use the following information to ensure we receive your contribution during this tax year:

1. Checks must be hand-delivered to North Creek Campus by 12:00pm on December 29, 2011 or postmarked by December 31, 2011.
2. [Donate online](http://www.woodinvillemontessori.org/giving) via our secure website at www.woodinvillemontessori.org/giving
3. To give securities, please use the information below and advise Development Manager Beth Bazley that you have made a gift. If you have questions, contact Meaghan E. McKenzie at 206-623-2051 or Meaghan.McKenzie@wedbush.com.

Gifts of Securities

Sending checks – mail to:
Wedbush Morgan Securities
601 Union Street
Suite 5050
Seattle, WA 98101
Please reference acct #2241-5704

DTC Eligible Securities – stock donations:
Deliver to DTC #0103
FBO: Woodinville
Montessori School
Acct: #2241-5704

Federal Wired Funds:
Bank of New York
New York, NY ABA: #021-000018
Acct: #8540900001
FFC: Wedbush Morgan Securities
FBO: Woodinville
Montessori School
Acct: #2241-5704

January Lunch Menu Available

The January menu from Lunchbox Leverage is now available. Gift certificates are also available for purchase. For more information, see News & Events on the WMS website home page. Additional information can be found at <https://lunchboxleverage.orderlunches.com>.

Are You Moving Up?

by Juliana Fitts, Admissions Director

Open House is a wonderful opportunity to learn more about our program and discover how our Montessori education develops “21st century skills” (see article on right). **Join us on Saturday, January 7th at 9am for an open house session for prospective and moving-up (EC to EL; EL to JH) families and students.**

Please invite a friend to join you. It is because of our WMS families that we have experienced such wonderful success and growth. Word of mouth referrals are the number one reason families come to our school. Thank you for helping us build the future of WMS!



Jr. High Art on Display at Kirkland Library

During the month of December a small collection of pieces from our Junior High art program are on display at the Kirkland Library.

The sampling of art work was made by 7th through 9th grade students, guided by Instructor Clay Blankenship. Projects utilize both 2-D and 3-D materials and emphasize personal style.

Students had the opportunity to develop their techniques with a variety of materials ranging from paint, paper, plaster, wood, metal, concrete, plastic, etc. Beginning with specific design and instructional components, they integrate lessons, ideas, and materials, to create their own unique vision. Their works take form, emerging ultimately not only as artistic realizations, but also as personal discoveries, works that are expressive, creative, and confident.

We look forward to future community art displays in Woodinville, Redmond, Kingsgate and Mukilteo as the school year unfolds. Stay tuned!

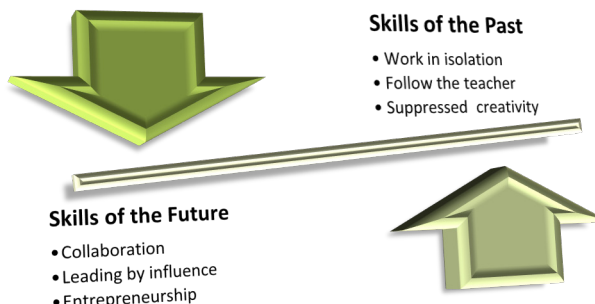
Thanks to AGP! Library Software

Thanks to generous donations to our Annual Giving Program we were able to invest in library catalog software and a laser barcode scanner to improve school-wide use of our library resources. We are excited to announce that the software is up and running allowing catalog access from every classroom. In addition, the barcode scanner facilitates the check-in/check-out process for students, teachers and parent volunteers. Thank you AGP!

Montessori & 21st Century Skills: Part II

by Juliana Fitts, Admissions Director

This is the second in a three part series to share information about how your children are developing “21st century skills” in their daily learning at WMS. Part I was published in the November 2, 2011 edition of the Grapevine.



Professor and best-selling author Tony Wagner traveled the country interviewing CEOs and Head Masters of top performing colleges and companies in the country for his ground breaking research. The CEO of IBM clearly explained why one of the characteristics he most valued in his team leaders was what he called “the ability to lead by influence”. The ability to successfully get people to collaborate, cooperate, value different opinions, and cultural differences, is crucial to driving high performance for the company.

The 21st century classroom environment must allow for more social interaction, collaborative learning, leadership, and peer teaching. Sugata Mitra, a professor of Educational Technology at New Castle, England, presented findings of research he conducted in remote areas of India at the prestigious TED Conference. In 1999, along the streets of New Delhi’s slums, Mitra carved holes at child’s eye level (about three feet from the ground). Inside these holes in the walls, he placed touch screen computers equipped with high speed internet. He wanted to see how children would use these computers, since they had no idea what computers were or how to operate them, so he placed hidden cameras above the computers as well. Six months later he returned to collect the computers to see what had transpired. The video tapes revealed that within 14 days, the children not only taught themselves how to browse the internet, download games and even record their own music, but they also were instructing the younger ones too. Mitra found that “children will learn what they want”, a phenomenon he refers to as “self-organizing systems in education”. (Mitra, S. 2006) The conventional model of education isolates students at their own desks, with their own computers, answering all the same questions, contradicting this concept of self-organizing learning systems.

As you stop to observe the classrooms at WMS, what do you see? Note the collaborative atmosphere among multi-age children, student-centric designed curriculums, kinesthetic learning materials and a focus on the development of moral and social skills. The teacher functions as a guide, connecting students to the materials and directing them towards their intellectual pursuits. This environment cultivates the holistic development of the child – providing the social, emotional and intellectual development necessary to lead in the 21st Century.

Stay tuned for part three in a future edition of the Grapevine, and come to Open House to learn more!